

Portable

NuQ118B

18" Band Pass Subwoofer for
Portable PA and Installation Applications

- Band pass subwoofer for portable PA and installation applications
- 600 Watts continuous, 2,400 Watts peak power
- Double suspension 18" low frequency driver with inside/outside wound coil
- Low distortion dual port design for maximum sound pressure level
- 18 mm (¾") birch plywood enclosure with hard wearing semi matt black paint finish
- Integral M10 rigging points for ease of installation
- 35 mm pole mount to support satellite speaker
- Neutrik speakON* NL4 connectors for reliable long life operation
- 10-Year Warranty Program*
- Designed and engineered in the U.K.



The 2,400 Watt NuQ118B is an 18" dual ported bandpass enclosure that is optimally tuned for extended low frequency response. Engineered to work in conjunction with **TURBOSOUND** loudspeaker management systems, the NuQ118B provides very high output FOH performance and is ideally suited for a wide range of music and live sound reinforcement applications.



The NuQ118B features a powerful, double suspension 18" low frequency driver that utilizes a specialised inside/outside wound voice coil for higher magnetic density, better heat dissipation, high power handling capacity, and improved efficiency. For its size and operating bandwidth, the NuQ118B delivers extremely high output that is virtually distortion-free – even in the most demanding applications.

Finished in a highly durable semi matt black paint, the cabinet is constructed from 18 mm (¾") birch plywood and includes: multiple threaded rigging points; a 35 mm pole socket; integrated carry handles for convenient transport – and high impact interlocking corners for ground stacking stability. The rear panel connector plate carries Neutrik speakON* NL4 connectors, with switchable input and link connections to accommodate standalone subwoofer applications, or subwoofer and satellite speaker connectivity via 4 core speaker cabling.

NuQ118B

18" Band Pass Subwoofer for
Portable PA and Installation Applications



You Are Covered

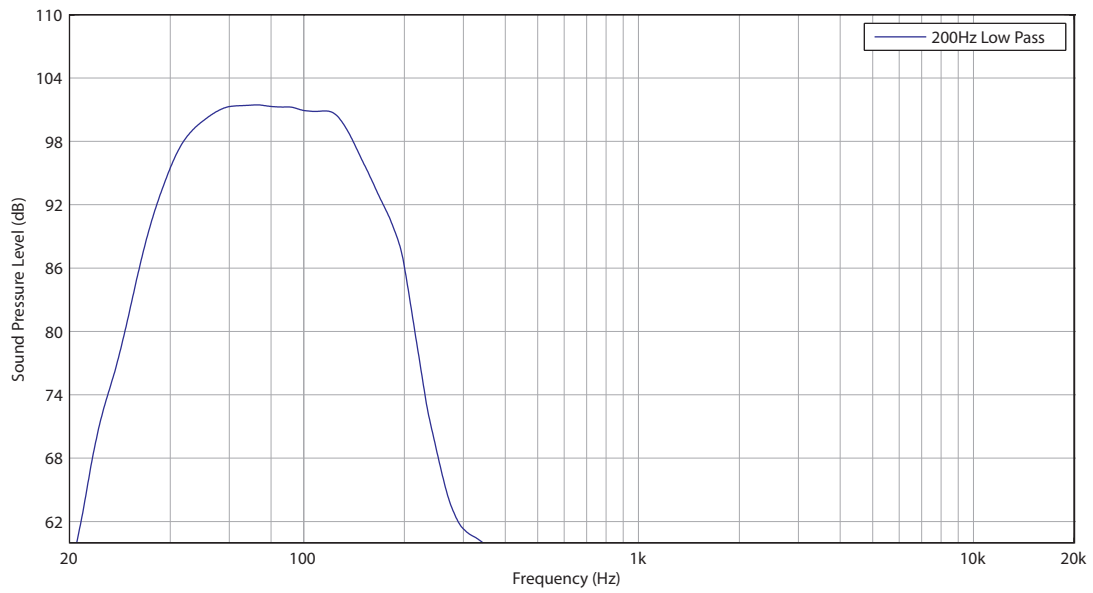
We always strive to provide the best possible Customer Experience. Our products are made in our own [MUSIC Tribe](#) factory using state-of-the-art automation, enhanced production workflows and quality assurance labs with the most sophisticated test equipment available in the world. As a result, we have one of the lowest product failure rates in the industry, and we confidently back it up with a generous [Warranty program](#).

Portable

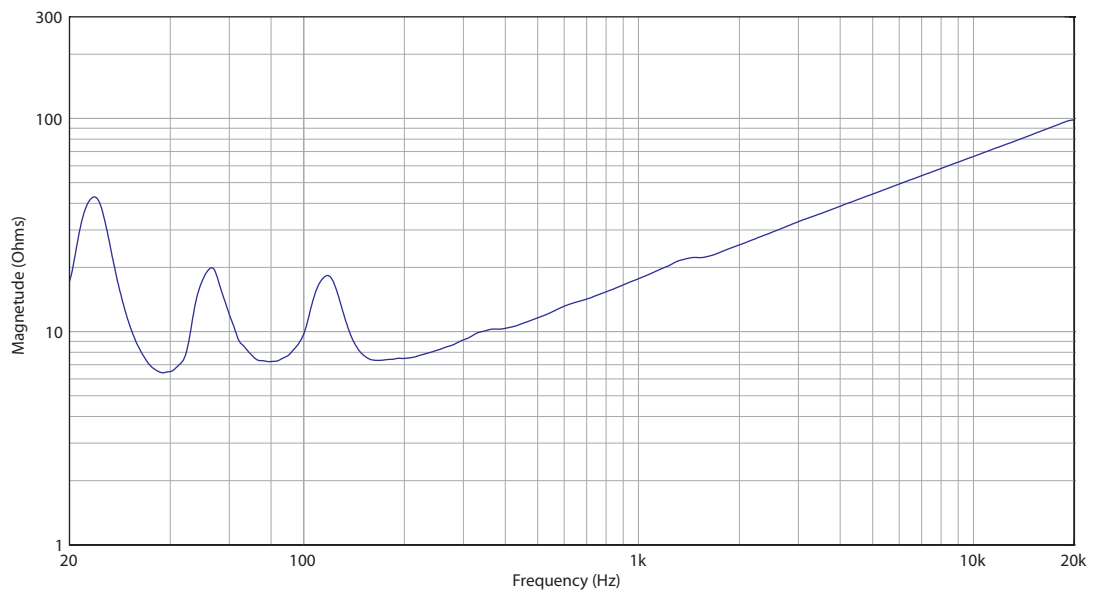
NuQ118B

18" Band Pass Subwoofer for
Portable PA and Installation Applications

Frequency Response Sensitivity 1 W / 1 m



Impedance

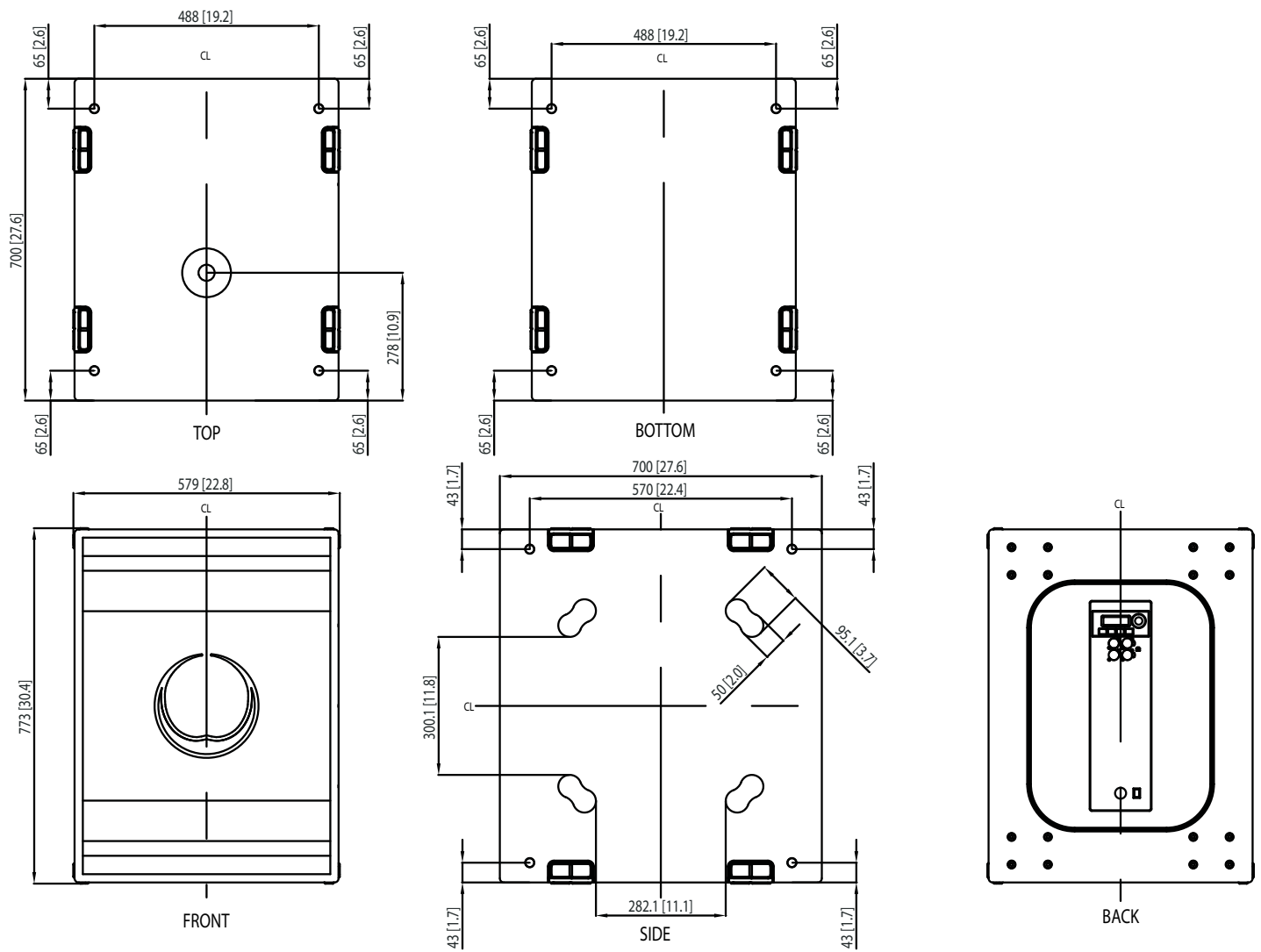


Portable

NuQ118B

18" Band Pass Subwoofer for
Portable PA and Installation Applications

Dimensions



Portable

NuQ118B

18" Band Pass Subwoofer for
Portable PA and Installation Applications

Technical Specifications

System

Frequency Response	40 Hz – 150 Hz \pm 3 dB 33 Hz – 150 Hz - 10 dB
Nominal Dispersion	Half space
Power Handling (IEC)	600 W continuous, 2,400 W peak
Sensitivity	100 dB (1 W @ 1 m)
Maximum SPL	128 dB continuous, 134 dB peak
Impedance	8 Ohms
Components	1 x 18" (460 mm) LF driver

Enclosure

Connectors	2 x Neutrik speakON* NL4
Wiring	
Switch position 1	Pins 1+ / 1- input, pins 2+ / 2- link
Switch position 1	Pins 1+ / 1- link, pins 2+ / 2- input
Dimensions (H x W x D)	773 x 579 x 700 mm (30.4 x 22.8 x 27.6")
Net Weight	56.5 kg (124.6 lbs)
Construction	18 mm (¾") birch plywood
Finish	Semi matt black paint
Grille	N/A
Flying Hardware	M10 x 16 points

NuQ118B

18" Band Pass Subwoofer for
Portable PA and Installation Applications

Architecture & Engineering Specifications

The speaker shall be of the passive subwoofer type consisting of one 18" (460 mm) LF driver. Performance specifications of a typical production unit shall meet or exceed the following: frequency response, measured with swept sine wave input, shall be flat within ± 3 dB from 40 Hz to 150 Hz and within -10 dB from 33 Hz to 150 Hz. Nominal dispersion shall be "half space." Nominal impedance shall be 8 Ohms. Power handling shall be 600 Watts continuous, 2,400 Watts peak. Sensitivity, measured on axis, mean averaged over stated bandwidth, shall be 100 dB, 1 Watt @ 1 metre. Maximum SPL (peak), measured at 1 metre with music program at stated amplifier input, shall be 134 dB. Dimensions: 773 mm high x 579 mm wide x 700 mm deep (30.4" x 22.8" x 27.6"). Net weight: 56.5 kg (124.6 lbs). The loudspeaker system shall be the [TURBOSOUND NuQ118B](#). No other loudspeaker shall be acceptable unless submitted data from an independent test laboratory verifies that the above combined performance / size specifications are equaled or exceeded.

Portable

NuQ118B

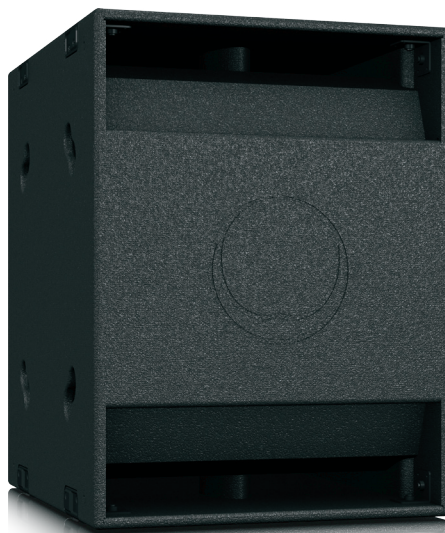
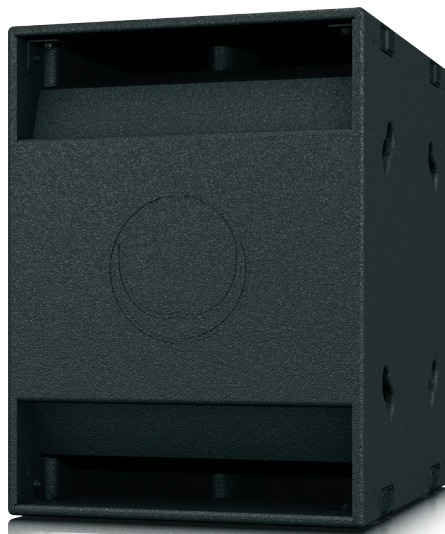
18" Band Pass Subwoofer for
Portable PA and Installation Applications



Portable

NuQ118B

18" Band Pass Subwoofer for
Portable PA and Installation Applications



Portable

NuQ118B

18" Band Pass Subwoofer for
Portable PA and Installation Applications



For service, support or more information contact the TURBOSOUND location nearest you:

Europe
MUSIC Tribe Brands UK Ltd.
 Tel: +44156 273 2290
 Email: CARECrea@music-group.com
 CAREEnte@music-group.com
 CARELife@music-group.com

USA/Canada
MUSIC Tribe Commercial NV Inc.
 Tel: +1 702.800 8290
 Email: CARECrea@music-group.com
 CAREEnte@music-group.com
 CARELife@music-group.com

Japan
MUSIC Tribe Services JP K.K.
 Tel: +81 3 6231 0453
 Email: CARECrea@music-group.com
 CAREEnte@music-group.com
 CARELife@music-group.com

MUSIC Tribe accepts no liability for any loss which may be suffered by any person who relies either wholly or in part upon any description, photograph, or statement contained herein. Technical specifications, appearances and other information are subject to change without notice. All trademarks are the property of their respective owners. MIDAS, KLARK TEKNIK, LAB GRUPPEN, LAKE, TANNØY, TURBOSOUND, TC ELECTRONIC, TC HELICON, BEHRINGER, BUGERA and COOLAUDIO are trademarks or registered trademarks of MUSIC Group IP Ltd. © MUSIC Group IP Ltd. 2018 All rights reserved.