

# PRO LCD SWITCH

Set of 8 Pushbutton Switches with LCD Display and LED Backlight

- Momentary action pushbutton switch with tactile feedback
- 36 x 24 pixel resolution dot matrix graphic LCD display
- RGB LED backlight offers high visibility in all lighting conditions
- FSTN LCD Glass for high contrast and wide viewing angle
- 8 distinct displayable LED colours
- 2 wire serial data interface with up to 1 MHz operation
- Replacement for Screenkeys\* RGB24T LCD Switch in MIDAS XL8 and PRO SERIES consoles
- 10-Year Warranty Program\*
- Designed and engineered in the U.K.



PRO LCD SWITCH enables dynamic and context-sensitive user interfaces, providing clear visual feedback of assigned functions and user-created labelling of mixing console channel, bus and group selections. The high contrast FSTN LCD glass with 36 x 24 pixel resolution allows immediate at-a-glance indication over a very wide viewing angle, and the tactile response of the momentary switch action provides confidence that the switch has been pressed, essential when the mix engineer's eyes are on the stage, not the console.



PRO LCD SWITCH provides the key user interface functionality for the Midas console VCA and POPulation group navigation system, which mirrors the natural workflows used by mix engineers. The RGB LED backlight offers high visibility in all lighting conditions, and the colour coding offered by the 8 distinct displayable LED colours encourages the development of a mental picture, or "Mind Map", of the whole console system. The flexibility of PRO LCD SWITCH ensures only the required control elements and associated visual feedback are presented, allowing users to adopt structured task-based workflows.

PRO LCD SWITCH is suitable for use in all Midas XL8 and PRO SERIES digital consoles and control centres, including as a replacement for the Screenkeys RGB24T LCD switch. w

# PRO LCD SWITCH

Set of 8 Pushbutton Switches with  
LCD Display and LED Backlight



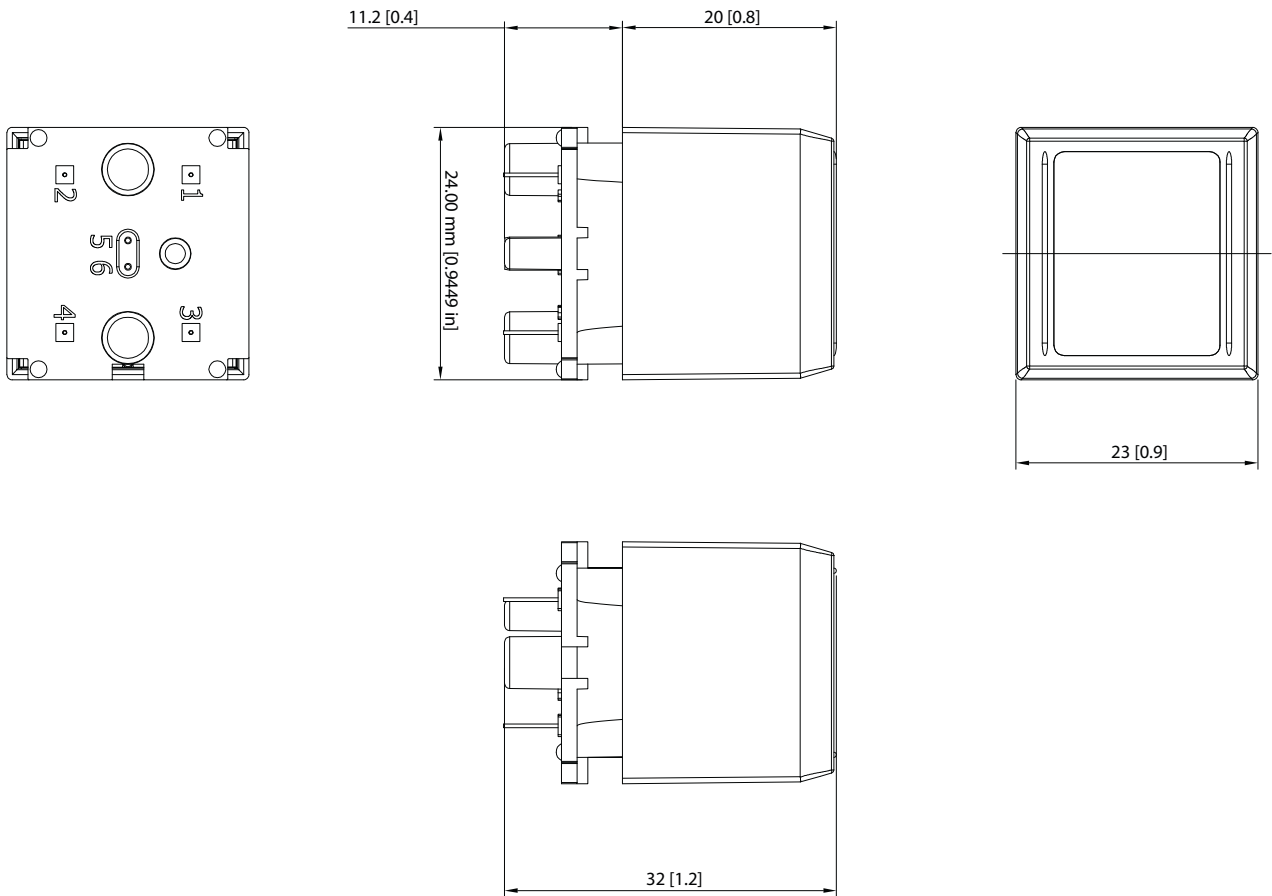
## You Are Covered

We always strive to provide the best possible Customer Experience. Our products are made in our own [MUSIC Tribe](#) factory using state-of-the-art automation, enhanced production workflows and quality assurance labs with the most sophisticated test equipment available in the world. As a result, we have one of the lowest product failure rates in the industry, and we confidently back it up with a generous [Warranty program](#).

# PRO LCD SWITCH

Set of 8 Pushbutton Switches with  
LCD Display and LED Backlight

## Dimensions



# PRO LCD SWITCH

Set of 8 Pushbutton Switches with  
LCD Display and LED Backlight

## Technical Specifications

### Product Specifications

|                             |  |
|-----------------------------|--|
| Pixel matrix                | 36 x 24  |
| LED backlighting colours    | Red, Green, Blue, Magenta, Cyan,<br>White, Pink, Yellow          |
| Operating voltage           | 5 Volt DC (Nominal)  |
| Dimensions                  | 23 mm length x 24 mm width x<br>32 mm height (0.9" x 0.9" x 1.2) |
| LCD screen size             | 19.5 mm length x 16.1 width                                      |
| Pixel field size            | 14.7 mm length x 10.3 mm width                                   |
| Maximum data rate           | 1 MHz  |
| Operating temperature range | +5°C to +45°C  |
| Storage temperature range   | -20°C to +60°C   |

# PRO LCD SWITCH

Set of 8 Pushbutton Switches with  
LCD Display and LED Backlight

## Architecture and Engineering Specifications

The LCD switch shall be intended for use on digital audio mixing consoles and control centres as part of the user interface and navigation system.

The LCD switch shall provide a momentary switch action pushbutton with tactile feedback.

The LCD switch shall feature a 36 x 24 pixel resolution dot matrix graphic FSTN LCD display.

The LCD switch shall include an RGB LED backlight with 8 distinct displayable LED colours.

The LCD switch shall have a 2 wire serial data interface with up to 1 MHz operation.

The LCD switch shall be a replacement for Screenkeys RGB24T LCD switch in [Midas XL8](#) and [PRO SERIES](#) consoles.

The LCD switch shall be the [Midas PRO LCD SWITCH](#) and no other alternative shall be acceptable.

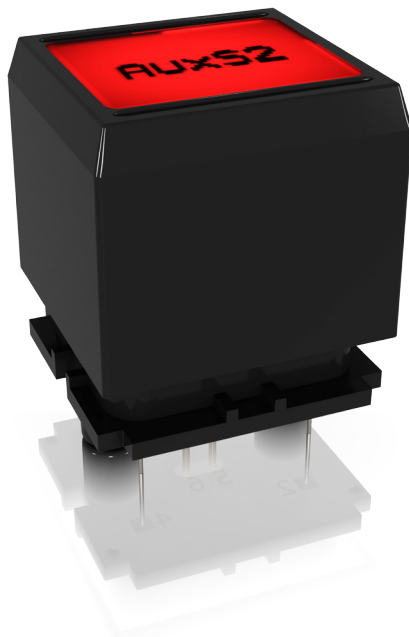
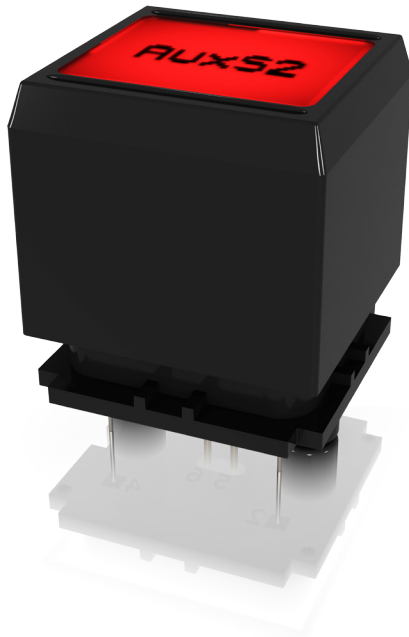
# PRO LCD SWITCH

Set of 8 Pushbutton Switches with  
LCD Display and LED Backlight



# PRO LCD SWITCH

Set of 8 Pushbutton Switches with  
LCD Display and LED Backlight



For service, support or more information contact the MIDAS location nearest you:

**Europe**  
**MUSIC Tribe Brands UK Ltd.**  
Tel: +44156 273 2290  
Email: CARECrea@music-group.com  
CAREEnte@music-group.com  
CARELife@music-group.com

**USA/Canada**  
**MUSIC Tribe Commercial NV Inc.**  
Tel: +1 702 800 8290  
Email: CARECrea@music-group.com  
CAREEnte@music-group.com  
CARELife@music-group.com

**Japan**  
**MUSIC Tribe Services JP K.K.**  
Tel: +81 3 6231 0453  
Email: CARECrea@music-group.com  
CAREEnte@music-group.com  
CARELife@music-group.com

MUSIC Tribe accepts no liability for any loss which may be suffered by any person who relies either wholly or in part upon any description, photograph, or statement contained herein. Technical specifications, appearances and other information are subject to change without notice. All trademarks are the property of their respective owners. MIDAS, KLARK TEKNIK, LAB GRUPPEN, LAKE, TANNOY, TURBOSOUND, TC ELECTRONIC, TC HELICON, BEHRINGER, BUGERA and COOLAUDIO are trademarks or registered trademarks of MUSIC Tribe Global Brands Ltd. © MUSIC Tribe Global Brands Ltd. 2018 All rights reserved.