

## Install

# QFLEX 32LS-WP

Digitally Steerable Powered Column Array Loudspeaker with 32 Independently Controlled Drivers, Integrated DSP and BeamEngine GUI Control for Life Safety Installation Applications (Weather Protected)

- Digitally steerable column array speaker system provides high intelligibility speech reproduction
- 16 4" low frequency drivers, 8 3" low frequency drivers and 8 1" high frequency drivers with individual 100 Watt Class D amplifiers
- Class leading  $\pm 70^\circ$  steering control with 32 channels of integrated DSP and amplification
- Intuitive BeamEngine GUI for asymmetric pattern creation and even near and far field SPL coverage
- High density array of transducers with proportional frequency spacing prevents aliasing artefacts
- Ideal for the most challenging acoustic environments due to extended frequency range steering control
- For life safety installation applications with coverage distances up to 65 m (213')
- Fully PA/VA compliant
- Fully integrated amplified speaker system connects to other TANNOY products via VNET
- Input accessory options for constant voltage systems and Audinate Dante\* digital audio networks
- All components weather and dust resistant to IP54
- Architecturally styled aluminium enclosure with a semi matt white painted finish
- Corrosion resistant aluminium perforated grille

The QFLEX 32LS-WP is a powered, digitally steerable multi-channel, column array loudspeaker designed as a complete solution for installed applications with challenging acoustics, such as houses of worship, transportation hubs, convention centres, conference facilities, shopping malls, performing arts centres and museums. Certified for water and dust ingress protection to IP54 standard, QFLEX 32LS-WP is an exceptional choice for indoor swimming pools and areas with unusually high levels of dust or moisture, as well as outdoor applications where weather conditions are moderate. The heart of the system is our proprietary VNET loudspeaker networking platform, which comprises both software and hardware DSP components that produce extremely-high speech intelligibility, impactful music reinforcement, and complete loudspeaker system diagnostics and monitoring.



## Install

# QFLEX 32LS-WP

Digitally Steerable Powered Column Array Loudspeaker with 32 Independently Controlled Drivers, Integrated DSP and BeamEngine GUI Control for Life Safety Installation Applications (Weather Protected)

- Included custom brackets allow quick and accurate installation
- AES3 input and link connections on RJ-45 connectors with internal sample rate conversion up to 96 kHz
- 10-Year Warranty Program\*
- Designed and engineered in the U.K.



## Class-Leading Control

While many competing steerable arrays allow only a modest steering range across specific frequencies, the QFLEX 32LS-WP has a class-leading  $\pm 70^\circ$  steering control, plus 32 channels of integrated DSP and amplification for consistent and highly intelligible full-range voice and music applications.

## A Revolution in Sound Technology

The first digitally steerable column array loudspeaker of its kind, QFLEX 32LS-WP's revolutionary BeamEngine technology steers the the full-range sound away from surfaces that cause reflections. The intuitive BeamEngine GUI allows the designer to specify target areas. Rather than only providing a limited palette of opening and steering angles, the BeamEngine GUI generates a steering algorithm that is tailored for that specific area. The resulting asymmetrical pattern delivers similar sound pressure levels (SPL) in both the near and far field for superb coverage and intelligibility – all in a very aesthetically-pleasing package.

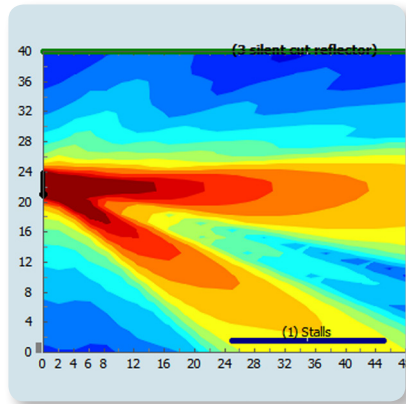


\*Dante is a trademark of Audinate Pty Ltd. All third-party trademarks are the property of their respective owners. Their use neither constitutes a claim of the trademark nor affiliation of the trademark owners with MUSIC Tribe. Product names are mentioned solely as a reference for compatibility, effects and/or components. Warranty details can be found at musictri.be.

Install

# QFLEX 32LS-WP

Digitally Steerable Powered Column Array Loudspeaker with 32 Independently Controlled Drivers, Integrated DSP and BeamEngine GUI Control for Life Safety Installation Applications (Weather Protected)

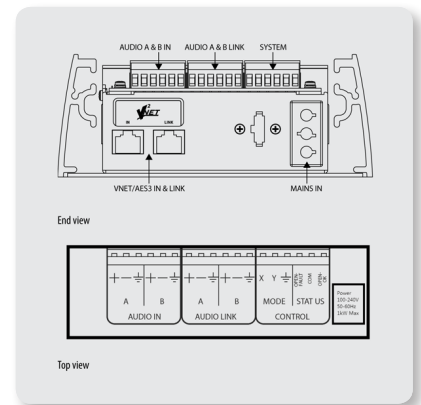


## Drivers, Power & DSP

The QFLEX 32LS-WP column array loudspeaker comprises sixteen 4" low frequency drivers, eight 3" low frequency drivers and eight 1" high frequency drivers, each with their own individual 100 Watt Class D amplifier and integrated cutting edge DSP. Presented in a high density array with proportional frequency spacing, QFLEX 32LS-WP's drivers provide digitally-steerable coverage for distances up to 65 m (213') – with no aliasing artefacts. A robust internal DSP engine works seamlessly with the proprietary VNET and BeamEngine software, both of which are available for free download at [tannoy.com](http://tannoy.com).

## Scalability

Designed to provide premium-grade performance as a standalone self-powered column array, QFLEX 32LS-WP is also an exceptional choice for multiple-column configurations consisting of other TANNOY VNET enabled products. Implementation of the network between nodes is via high-quality rugged Neutrik Ethercon connectors, which are compatible with standard RJ45 plugs, and CAT5 cable. Each speaker has a unique address for auto-location on the network.



## System Add-Ons

A wide range of accessory options are available for the VNET-enabled QFLEX 32LS-WP including: The VNET ETHERNET INTERFACE; VNET USB RS232 INTERFACE; VNET2-AES INTERFACE, VNET INTERFACE POWER SUPPLY; VNET INTERFACE RACK MOUNT; SENTINEL SM1, for monitoring VNET networked PA/VA systems, as well as the QFLEX ISOLATOR, for eliminating potential ground/hum issues.

Install

# QFLEX 32LS-WP

Digitally Steerable Powered Column Array  
Loudspeaker with 32 Independently Controlled  
Drivers, Integrated DSP and BeamEngine  
GUI Control for Life Safety Installation  
Applications (Weather Protected)

## IP54 & PA/VA Compliant

In addition to its IP54 water and dust resistance certification, QFLEX 32LS-WP's high level of telemetry functionality renders it fully PA/VA compliant for use in any life safety or mass notification environment.



## Build Quality

The architecturally styled corrosion resistant aluminium enclosure and perforated grille are finished in a semi matt white paint. The QFLEX 32LS-WP also includes the necessary custom mounting hardware for quick and accurate installation.

## You Are Covered

We always strive to provide the best possible Customer Experience. Our products are made in our own MUSIC Tribe factory using state-of-the-art automation, enhanced production workflows and quality assurance labs with the most sophisticated test equipment available in the world. As a result, we have one of the lowest product failure rates in the industry, and we confidently back it up with a generous Warranty program.

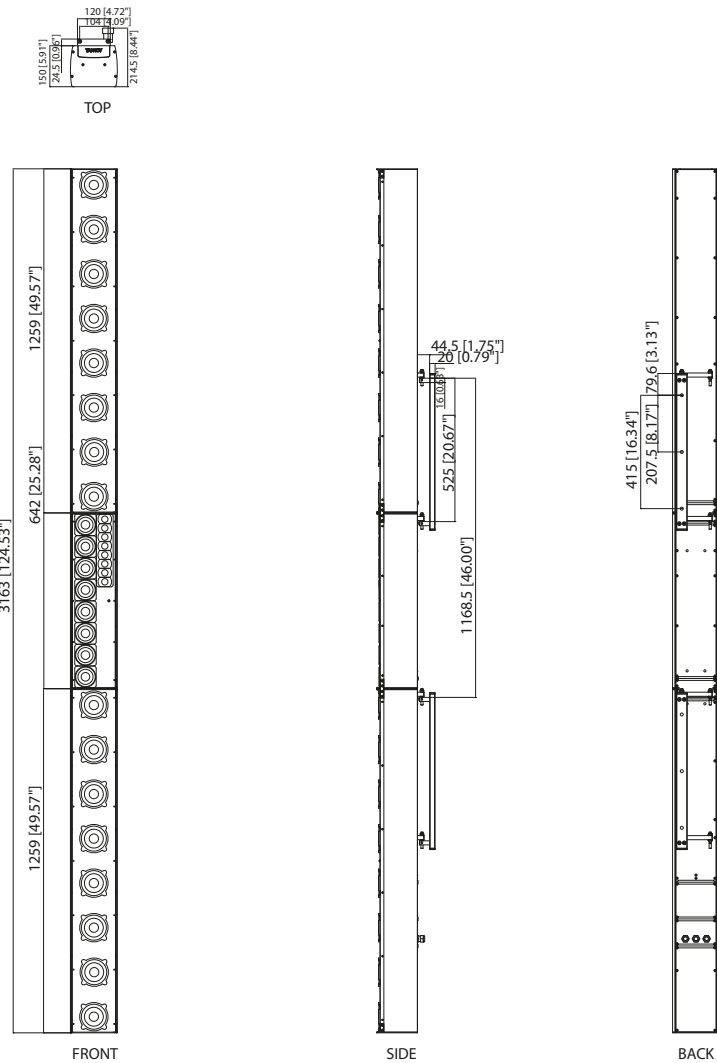


# Install

## QFLEX 32LS-WP

Digitally Steerable Powered Column Array  
Loudspeaker with 32 Independently Controlled  
Drivers, Integrated DSP and BeamEngine  
GUI Control for Life Safety Installation  
Applications (Weather Protected)

### Dimensions





## Install

# QFLEX 32LS-WP

Digitally Steerable Powered Column Array  
Loudspeaker with 32 Independently Controlled  
Drivers, Integrated DSP and BeamEngine  
GUI Control for Life Safety Installation  
Applications (Weather Protected)

## Technical Specifications

### Configuration

|   |  |
|---|--|
| 4" LF                                       | 16   |
| 3" LF                                       | 8  |
| 1" HF                                       | 8  |
| No. of amp channels<br>100 W (RMS) @ 4 Ohms | 32   |
| Vertical dispersion                         | 5 - 100 degrees symmetrical or asymmetrical,<br>single or multiple beams   |
| Frequency range                             | 110 Hz - 20 kHz  |
| Horizontal dispersion <sup>1</sup>          | 120 degrees  |
| Aiming angle limit                          | ± 70 degrees   |
| LF beam control limit                       | 200 Hz   |
| Maximum SPL @ 100 ft (30 m)*                | 100 dB   |
| Column height                               | 3163 mm (124.5")   |
| Column width                                | 172 mm (6.7")  |
| Column depth                                | 150 mm (5.9")  |
| Typical application distance**              | Up to 65m (213 ft)   |
| Sample rate                                 | 96 kHz   |
| Audio inputs                                | Analogue & AES/EBU   |
| Weight (incl. hardware)                     | 46.4 kg (102.1 lbs)  |
| Accessories                                 | VNET USB Interface, VNET Ethernet Interface,<br>VNET2-Dante Bridge, VNET Interface Power<br>Supply, Sentinel SM1 System Monitor,<br>AES Break-in box, QFlex Isolator |
| Mains supply                                | 100 - 240 V~ 50/60 Hz  |
| Power consumption                           | 390 w @ 1/8 max power  |

\* Note: The maximum power requirements for QFlex models are 1000 W

Install

# QFLEX 32LS-WP

Digitally Steerable Powered Column Array  
Loudspeaker with 32 Independently Controlled  
Drivers, Integrated DSP and BeamEngine  
GUI Control for Life Safety Installation  
Applications (Weather Protected)



Install

# QFLEX 32LS-WP

Digitally Steerable Powered Column Array  
Loudspeaker with 32 Independently Controlled  
Drivers, Integrated DSP and BeamEngine  
GUI Control for Life Safety Installation  
Applications (Weather Protected)





Install

# QFLEX 32LS-WP

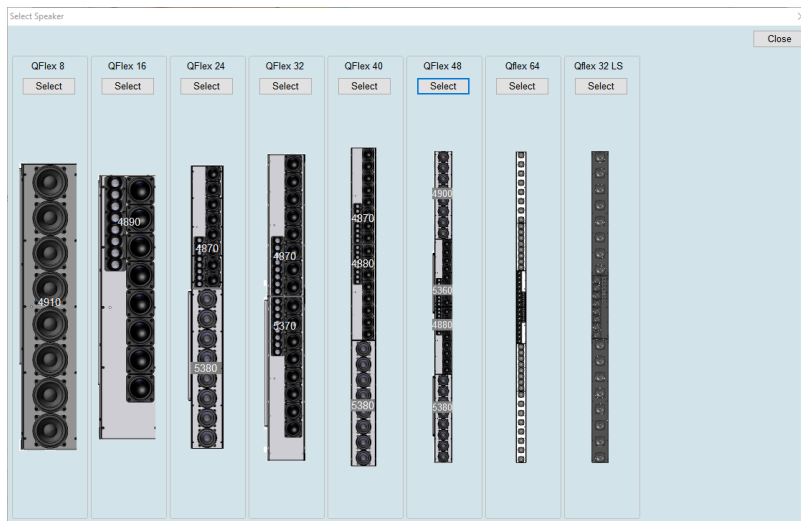
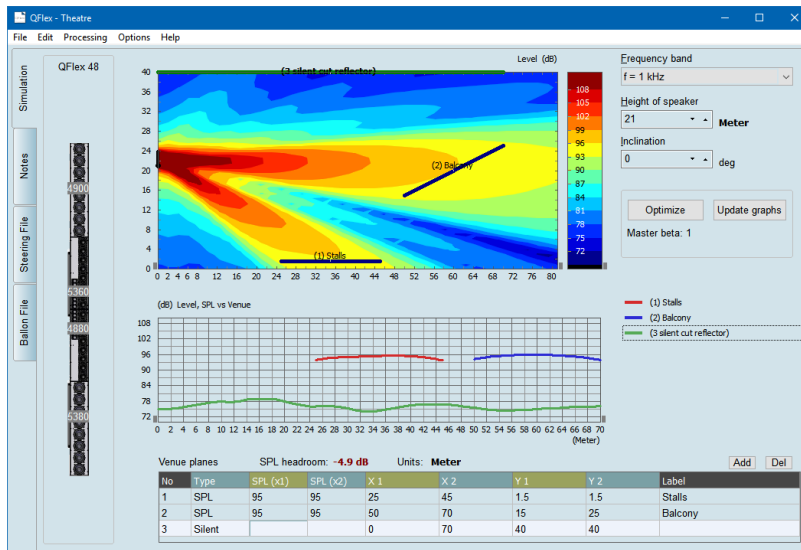
Digitally Steerable Powered Column Array  
Loudspeaker with 32 Independently Controlled  
Drivers, Integrated DSP and BeamEngine  
GUI Control for Life Safety Installation  
Applications (Weather Protected)



# Install

## QFLEX 32LS-WP

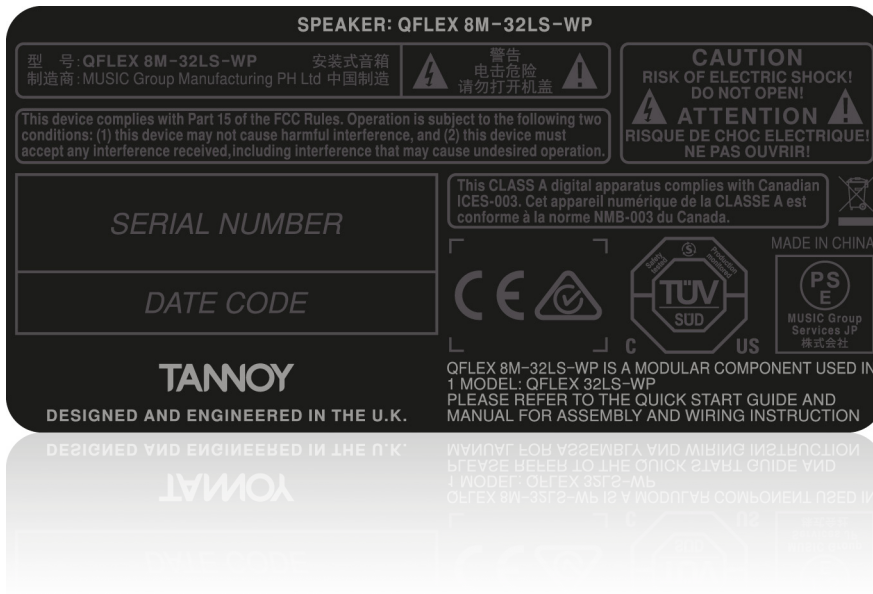
Digitally Steerable Powered Column Array Loudspeaker with 32 Independently Controlled Drivers, Integrated DSP and BeamEngine GUI Control for Life Safety Installation Applications (Weather Protected)



Install

# QFLEX 32LS-WP

Digitally Steerable Powered Column Array  
Loudspeaker with 32 Independently Controlled  
Drivers, Integrated DSP and BeamEngine  
GUI Control for Life Safety Installation  
Applications (Weather Protected)



For service, support or more information contact the TANNOY location nearest you:

**Europe**  
**MUSIC Tribe Brands UK Ltd.**  
Tel: +44156 273 2290  
Email: CARECrea@music-group.com  
CAREnte@music-group.com  
CARELife@music-group.com

**USA/Canada**  
**MUSIC Tribe Commercial NV Inc.**  
Tel: +1 702 800 8290  
Email: CARECrea@music-group.com  
CAREnte@music-group.com  
CARELife@music-group.com

**Japan**  
**MUSIC Tribe Services JP K.K.**  
Tel: +81 3 6231 0453  
Email: CARECrea@music-group.com  
CAREnte@music-group.com  
CARELife@music-group.com

MUSIC Tribe accepts no liability for any loss which may be suffered by any person who relies either wholly or in part upon any description, photograph, or statement contained herein. Technical specifications, appearances and other information are subject to change without notice. All trademarks are the property of their respective owners. MIDAS, KLARK TEKNIK, LAB GRUPPEN, LAKE, TANNOY, TURBOSOUND, TC ELECTRONIC, TC HELICON, BEHRINGER, BUGERA and COOLAUDIO are trademarks or registered trademarks of MUSIC Tribe Global Brands Ltd. © MUSIC Tribe Global Brands Ltd. 2018 All rights reserved.

