

# SENTINEL SM1

Monitoring Unit for  
Networked Tannoy QFLEX Systems



- Monitors networked QFLEX systems to provide complete system-wide monitoring and reporting for compliant PA/VA systems
- Can be used standalone or with control PC running Tannoy PodWare Windows\* software application
- Isolated relay changeover switch contacts provide separate indication of Check and Fault conditions
- Reports Check conditions for QFLEX speakers including temperature and driver impedance warnings
- Reports Fault conditions for QFLEX speakers including missing pilot tone and out-of-range driver impedance, amplifier over-current and over-temperature and mains power
- Reports Fault conditions for missing control PC or other devices on the network
- Dedicated relay switch contacts provide automated fault responses
- History log with Fault recording
- Designed for use with PA/VA systems
- Redundant monitoring capability when used with other SENTINEL devices
- Front panel LCD display provides information on current status and what needs attention

SENTINEL SM1 System Monitor provides a complete, system wide fault monitoring and reporting solution for mission-critical QFLEX loudspeaker systems, especially in PA/VA and Life Safety applications. Built on a tried and trusted processing engine, the SM1 keeps a watchful eye on the audio system, and if required, any controlling PCs. Issues are reported both via relay contacts to the main monitoring panel in your system, on the front panel display, or through an external audible alarm (not included). Multiple SM1 devices can even monitor each other on the same network simultaneously in systems requiring dual redundancy operation.



be quickly located and remedied. A comprehensive set of on-board relay contacts can be used to report faults directly to other alarm systems, i.e., a fire panel, or other audible alert.

## Complete System Monitoring

The SENTINEL SM1 System Monitor is a pivotal QFLEX network accessory, assuring system integrity in sensitive applications that demand superior dependability and demonstrable functionality. The SM1 monitors the status of all devices on the same QFLEX network, reporting any fault condition that may occur on any connected device. The SM1 may be used in either stand-alone mode, or via a control Windows\* PC running the Tannoy PodWare software application. Any faults located on the network are displayed on the front panel, along with supplementary information so that issues can

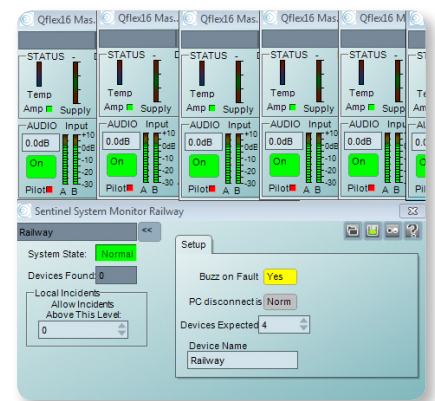
# SENTINEL SM1

Monitoring Unit for  
Networked Tannoy QFLEX Systems

- Status indicator LEDs on front panel for System Normal, PC Online, PC Fault, Check System and System Fault conditions
- Rugged 1U rackmount chassis designed for continuous use in demanding applications
- Auto-ranging universal switch-mode power supply for use worldwide
- 10-Year Warranty Program\*
- Designed and engineered in the U.K.

## Tannoy PodWare Windows\* Software Application

The companion PodWare PC Windows software application utilises a small panel (Monlcon) to display all important SM1 status information at a glance. From this small panel it is instantly possible to verify the overall health of your entire system. The complete control panel is only one click away from the Monlcon, and provides in-depth adjustment of all parameters of the SM1's operation. However, there is little to no setup required for most applications.



## QFLEX Ready

Designed to work seamlessly with the entire range of Tannoy QFLEX loudspeakers, the SM1 reports Check conditions including temperature and driver impedance warnings, and Fault conditions for including missing pilot tone and out-of-range driver impedance, amplifier over-current and over-temperature, as well as mains power availability.

\*All third-party trademarks are the property of their respective owners. Their use neither constitutes a claim of the trademark nor affiliation of the trademark owners with Music Tribe. Product names are mentioned solely as a reference for compatibility, effects and/or components. Warranty details can be found at [musictribe.com](http://musictribe.com).

## Accessories

# SENTINEL SM1

Monitoring Unit for  
Networked Tannoy QFLEX Systems

## Front Panel Notifications

Sentinel SM1's front panel and LCD display provide a wealth of system information at a glance, including: Check and Fault conditions; missing control PC, or other devices on the network; history log with fault recording, as well as redundant monitoring capability when used with other SENTINEL devices. The panel also features status indicator LEDs for System Normal, PC Online, PC Fault, Check System and System Fault conditions.



## Construction

A rugged 1U rackmount chassis is provided for easy and secure installation, plus the auto-ranging universal switch-mode power supply allows the SM1 to be used anywhere in the world. The SENTINEL SM1 is designed for continuous and reliable service in even the most demanding applications.

## You Are Covered

We always strive to provide the best possible Customer Experience. Our products are made in our own [Music Tribe](#) factory using state-of-the-art automation, enhanced production workflows and quality assurance labs with the most sophisticated test equipment available in the world. As a result, we have one of the lowest product failure rates in the industry, and we confidently back it up with a generous [Warranty program](#).

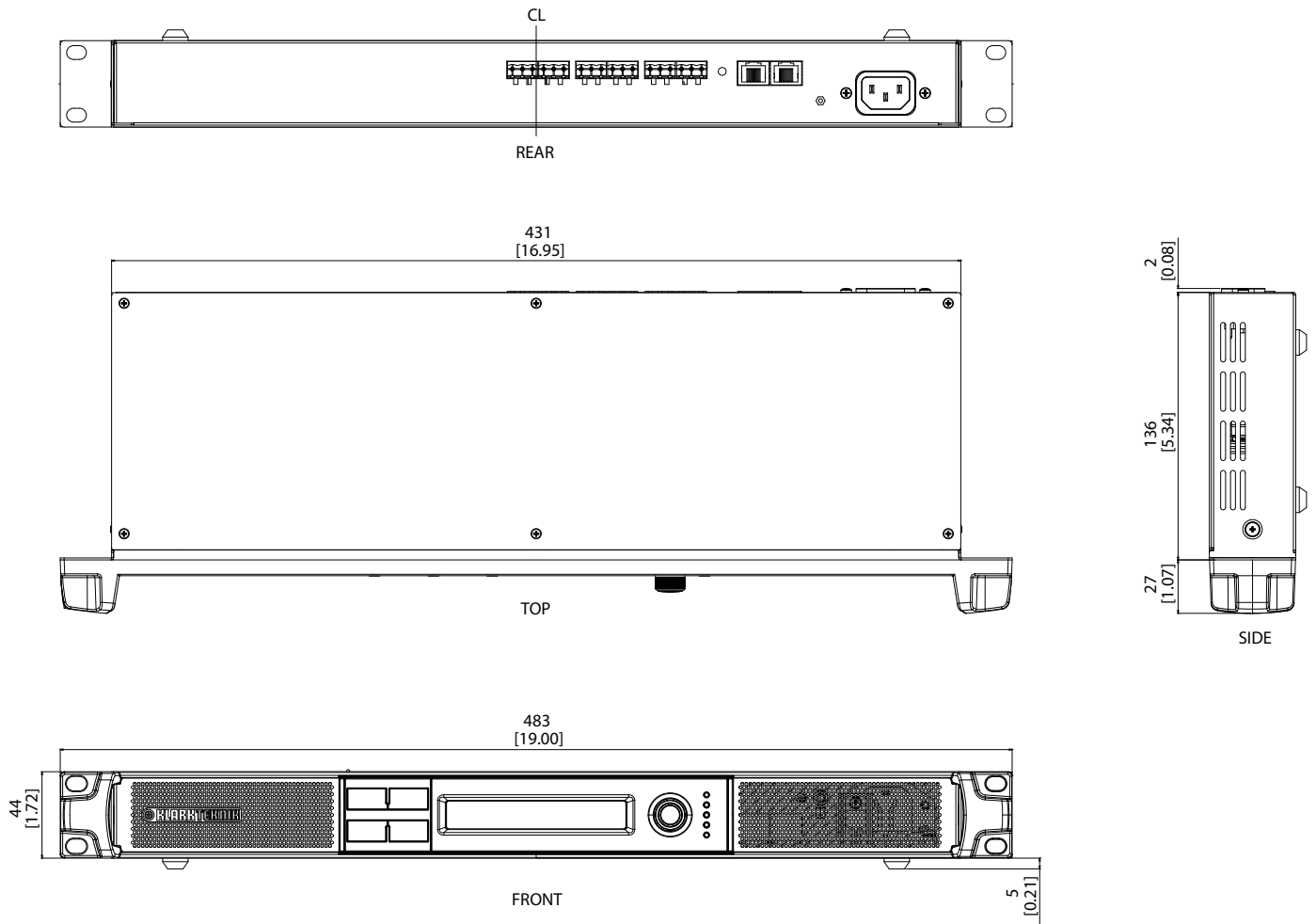


Accessories

# SENTINEL SM1

Monitoring Unit for  
Networked Tannoy QFLEX Systems

## Dimensions



## Accessories

# SENTINEL SM1

Monitoring Unit for  
Networked Tannoy QFLEX Systems

## Technical Specifications

### Connectors

Misc	2 x 3-pin phoenix
System	2 x 3-pin phoenix
Utility	2 x 3-pin phoenix
Network	2 x RJ45

### Display

Main display	Current status/check/fault condition history
LEDs	System normal (green) PC online (green) PC fault (amber) Check system (amber) System fault (amber)

### Power

Switch-mode power supply	Autorange 100-240 V (50/60 Hz)
Power consumption	30 W
Mains connection	Standard IEC cable

### Physical

Standard operating temperature range	0 to +55 degrees C
Humidity	0 to 80% RH (non-condensing)
Dimensions (H x W x D)	49 x 483 x 165 mm (1.9 x 19 x 6.5")
Weight	2.0 kg (4.4 lbs)

# SENTINEL SM1

Monitoring Unit for  
Networked Tannoy QFLEX Systems

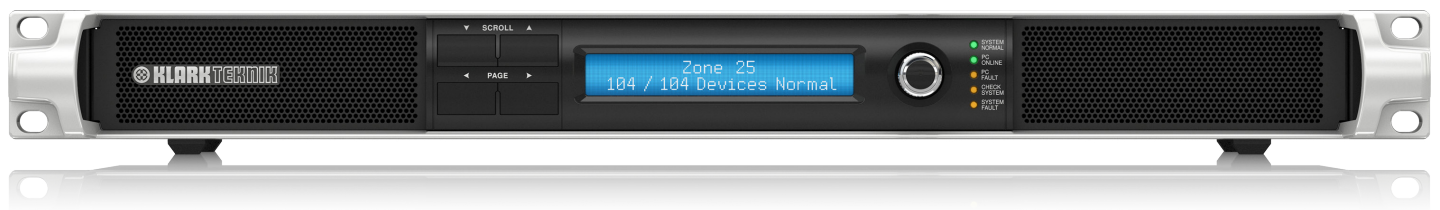
## Architecture & Engineering Specifications

The device shall be designed exclusively for [Tannoy](#) QFLEX systems to provide a complete system-wide fault monitoring and reporting solution for mission-critical applications. The device shall be configurable via the companion Podware application and monitor a QFLEX network to detect any missing devices, optionally monitor any connected PC and display any fault condition on any connected QFLEX device. The device shall incorporate indicators to show system status, have four change-over relays for connected external reporting and LCD display to show what needs attention. The device shall include two RJ45 sockets for control data, In: For the 'Inbound' connection derived from the PC, Link: For connection to other devices. The device shall be rack mountable (1RU). The device shall be the [Klark Teknik](#) Sentinel SM-1.

Accessories

# SENTINEL SM1

Monitoring Unit for  
Networked Tannoy QFLEX Systems



Accessories

# SENTINEL SM1

Monitoring Unit for  
Networked Tannoy QFLEX Systems

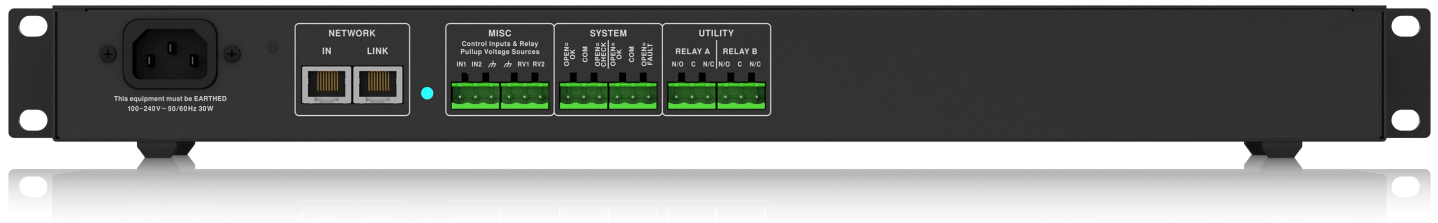




Accessories

# SENTINEL SM1

Monitoring Unit for  
Networked Tannoy QFLEX Systems



For service, support or more information contact the Klark Teknik location nearest you:

**Europe**  
**Music Tribe Brands UK Ltd.**  
Tel: +44156 273 2290  
Email: CARECrea@musictribe.com  
CAREEnte@musictribe.com  
CARELife@musictribe.com

**USA/Canada**  
**Music Tribe Commercial NV Inc.**  
Tel: +1 702 800 8290  
Email: CARECrea@musictribe.com  
CAREEnte@musictribe.com  
CARELife@musictribe.com

**Japan**  
**Music Tribe Services JP K.K.**  
Tel: +81 3 6231 0453  
Email: CARECrea@musictribe.com  
CAREEnte@musictribe.com  
CARELife@musictribe.com

Music Tribe accepts no liability for any loss which may be suffered by any person who relies either wholly or in part upon any description, photograph, or statement contained herein. Technical specifications, appearances and other information are subject to change without notice. All trademarks are the property of their respective owners. Midas, Klark Teknik, Lab Gruppen, Lake, Tannoy, Turbosound, TC Electronic, TC Helicon, Behringer, Bugera and Coolaudio are trademarks or registered trademarks of Music Tribe Global Brands Ltd. © Music Tribe Global Brands Ltd. 2018 All rights reserved.