

## Compressors/Limiters

# MULTICOM PRO-XL

## MDX4600

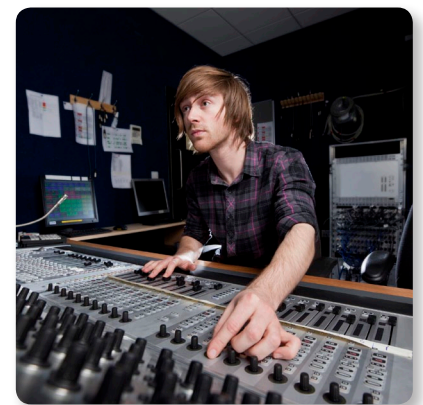
Reference-Class 4-Channel Expander/Gate/Compressor/Peak Limiter with Dynamic Enhancer and Low Contour Filter



- Switchable IKA (Interactive Knee Adaptation) program-adaptive compression circuitry combines the advantages of hard-knee and soft-knee characteristics
- IRC (Interactive Ratio Control) expander/gate circuitry for virtually inaudible noise suppression
- Switchable dynamic Enhancer for brilliant, lively audio even with heavy compression
- IGC (Interactive Gain Control) peak limiting circuitry combines clipper and program limiter for reliable and inaudible protection against signal peaks
- Switchable Low contour filter prevents “pumping” due to low-frequency dominated compression
- Stereo couple function selectable for channels  $\frac{1}{2}$  and  $\frac{3}{4}$
- Separate 8-segment LED meters for input/output levels and gain reduction
- Selectable operating level (+4 dBu/-10 dBV)
- Servo-balanced inputs and outputs with  $\frac{1}{4}$ " TRS and gold-plated XLR connectors
- Internal switch-mode power supply (100 - 240 V~) for noise-free audio and low power consumption
- 3-Year Warranty Program\*
- Designed and engineered in Germany

The reference-class MDX4600 is a marvelous 4-channel Expander/Gate/Compressor/Peak Limiter that is ideal for: compressing mono/stereo signals and providing virtually inaudible noise suppression, without loss of high frequencies; increasing vocal presence and energy; and limiting, or smoothing out extremely-high signal peaks. Additionally, the MDX4600 features

an integrated Dynamic Enhancer and Low-Contour filter to provide the ultimate in signal enrichment. Put simply, the MDX4600 can do amazing things for your vocals or instruments – providing virtually everything you need for studio-quality dynamics processing!



# MULTICOM PRO-XL MDX4600

Reference-Class 4-Channel Expander/Gate/  
Compressor/Peak Limiter with Dynamic  
Enhancer and Low Contour Filter



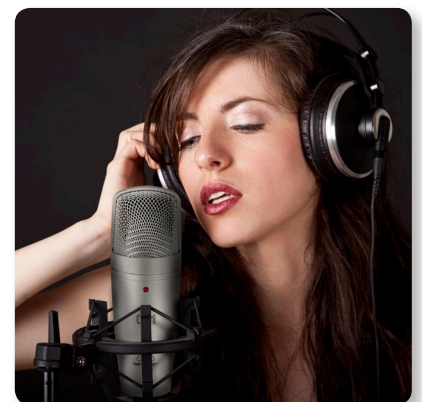
## Audio Dynamics Toolkit

Here are just a few of the MDX4600's outstanding capabilities:

- **Switchable IKA** (Interactive Knee Adaptation) – provides program-adaptive compression, combining all the advantages of both hard and soft-knee compression
- **IRC** (Interactive Ratio Control) Expander/Gate – ideal solution for noise floor reduction vs. applying notch filters and various equalizers for virtually inaudible noise suppression
- **Enhancer** – lets you emphasize the Bass, Midrange and Hi output at selectable frequencies for maximum punch, clarity and detail – without raising overall volume
- **IGC** (Interactive Gain Control) Peak Limiter – combines clipper and program limiter for reliable, inaudible protection against signal peaks
- **Stereo Couple** – links  $\frac{1}{2}$  and  $\frac{3}{4}$  channels, allowing dials and switches of Channels 1 and 3 to provide dynamics control over Channels 2 and 4, respectively (true stereo processing)

## Options Abound

The MDX4600 features amazingly-accurate, 8-segment LED meters for In/Out Level and Gain Reduction, switchable +4 dBu or -10 dBV operating level, Side Chain I/O, and servo-balanced XLR and  $\frac{1}{4}$ " Inputs and Outputs. Best of all, the MULTICOM PRO-XL MDX4600 takes up just a single rackspace.



Compressors/Limiters

# MULTICOM PRO-XL MDX4600

Reference-Class 4-Channel Expander/Gate/  
Compressor/Peak Limiter with Dynamic  
Enhancer and Low Contour Filter



## Sound Value

The incredible MDX4600 is the ideal solution for becoming the master of your dynamics. With its flexible routing options, all the I/O you could ask for, plus a host of other professional features – the MDX4600 is an exceptional tool for your live shows – and an absolute “must-have” for your studio! Check out the MULTICOM PRO-XL MDX4600 at your [BEHRINGER](#) dealer, or place your order online today.

## You Are Covered

We always strive to provide the best possible Customer Experience. Our products are made in our own [MUSIC Tribe](#) factory using state-of-the-art automation, enhanced production workflows and quality assurance labs with the most sophisticated test equipment available in the world. As a result, we have one of the lowest product failure rates in the industry, and we confidently back it up with a generous [Warranty program](#).



Compressors/Limiters

# MULTICOM PRO-XL MDX4600

Reference-Class 4-Channel Expander/Gate/  
Compressor/Peak Limiter with Dynamic  
Enhancer and Low Contour Filter



Compressors/Limiters

# MULTICOM PRO-XL MDX4600

Reference-Class 4-Channel Expander/Gate/  
Compressor/Peak Limiter with Dynamic  
Enhancer and Low Contour Filter



For service, support or more information contact the BEHRINGER location nearest you:

**Europe**  
**MUSIC Group Services UK**  
Tel: +44 1562 547 100  
Email: CARE@music-group.com

**USA/Canada**  
**MUSIC Group Services NV Inc.**  
Tel: +1 702 963 1300  
Email: CARE@music-group.com

**Japan**  
**MUSIC Group Services JP K.K.**  
Tel: +81 3 5833 9121  
Email: CARE@music-group.com

MUSIC Group accepts no liability for any loss which may be suffered by any person who relies either wholly or in part upon any description, photograph, or statement contained herein. Technical specifications, appearances and other information are subject to change without notice. All trademarks are the property of their respective owners. MIDAS, KLARK TEKNIK, LAB GRUPPEN, LAKE, TANNÖY, TURBOSOUND, TC ELECTRONIC, TC HELICON, BEHRINGER, BUGERA and COOLAUDIO are trademarks or registered trademarks of MUSIC Group IP Ltd.  
© MUSIC Group IP Ltd. 2018 All rights reserved.

